



# HB86 TJ+

## Exceptional productivity

- Telescopic jib provides 19 ft 8 in additional outreach for accessing work areas
- 3 simultaneous and proportional movements
- Double load capacity: 770 lbs (3 persons) or 500 lbs (2 persons)
- Tailswing of 28 in for more compactness

## Optimal rough terrain driving features

- 4 wheel drive
- Front oscillating axle
- Differential wheel lock
- 21 in ground clearance



**Haulotte**   
GROUP

More than lifting



# HB86 TJ+

## ROUGH TERRAIN TELESCOPIC BOOMS

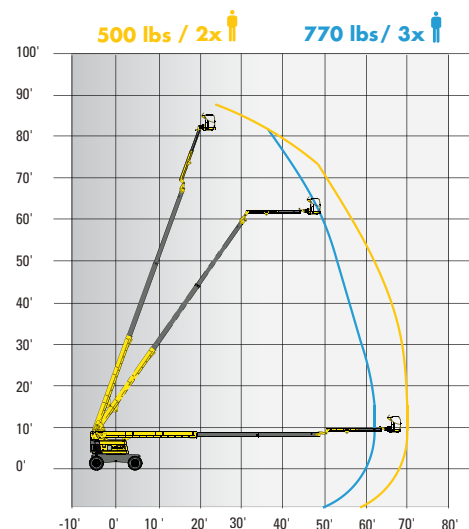
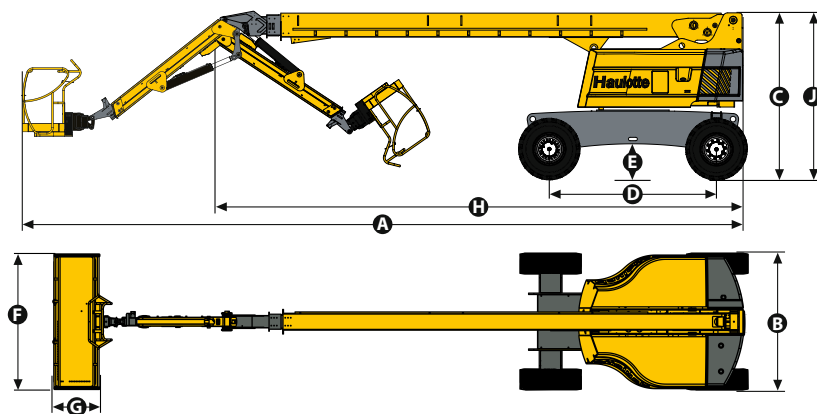
# Haulotte

GROUP

### TECHNICAL DATA

### HB86 TJ+

Working height	89 ft 8 in
Platform height	83 ft 8 in
Horizontal outreach	74 ft 6 in
Lift capacity	500 - 770 lbs
<b>F</b> x <b>G</b> Platform size	8 ft x 2 ft 7 in
<b>A</b> Length	40 ft 6 in
<b>H</b> Length - storage	31 ft
<b>B</b> Overall width	8 ft 2 in
Width - with extended axles	N/A
<b>C</b> Height - stowed	9 ft 8 in
<b>J</b> Height - storage	9 ft 8 in
Vertical jib rotation	133° (+63°/-70°)
Platform rotation	180° (+90°/-90°)
Boom rotation angle	75 °
Turntable rotation	360° continuous
Tailswing	28 in
<b>D</b> Wheelbase	9 ft 10 in
<b>E</b> Ground clearance	21 in
Drive speed	0.3 – 3.1 mph
Gradeability	40 %
Turning radius - outside	24 ft 5 in
Tires	385-45-28
Engine	55 kW - 75 hp
Weight	38,147 lbs



### STANDARD EQUIPMENT

- 4 wheel drive, 2 wheel steer
- Front oscillating axle
- Differential wheel lock
- Fully proportional controls
- 4 simultaneous movements
- Telescopic jib
- Dual load capacity : 500 lbs (2 persons) / 770 lbs (3 persons)
- Tilt / load alarm and light
- Electric pump system and emergency descent
- 12 V battery / electrical control system
- Foam filled rough terrain tires
- Rotating engine tray
- 8' platform with drop bar
- AC power to the platform
- Electric horn
- Hydrostatic transmission
- Low fuel level indicator (upper control box)
- Engine preheat system
- Hour meter
- Swing lockpin for easy transport
- Tow hooks and lift hooks

### OPTIONS AND ACCESSORIES

- AC generator 110V / 3kW
- Arctic Package (consult factory)
- Alarm package (motion alarm)
- Travel alarm
- Flashing beacon
- Air line to platform
- 55W platform worklight
- Hydraulic oil cooler
- Hydraulic oil in tank and circuit for warm countries
- Biodegradable hydraulic oil
- Upper control box protection cover (transparent plastic and fixed place)

